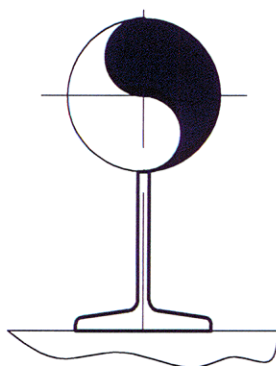


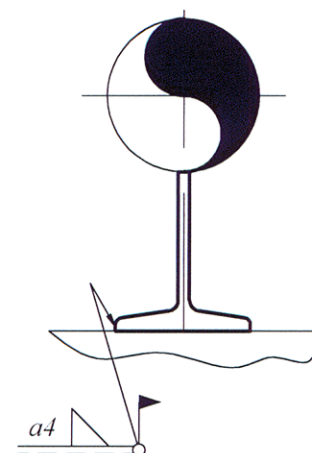
| Dn CONDUCTA | MARCA SUPPORT | SABOT | | | | GHIDAJ | | | Masa totala pe ans. |
|--------------------|----------------------|---------------|---------|---------|------------|---------------|----------------|----------------------|---------------------------|
| | | POZ.1 (1buc.) | | | | POZ.2 (1buc.) | | | |
| | | DIMENS. | h mm | L mm | MASA Kg | DIMENS. mm | MASA Kg/buc | MASA TOTALA Kg | |
| 15-80 | SpA1 | 1/2 I 14 | 70 | 200 | 1,44 | – | – | – | 1,44 |
| | SpG1 | 1/2 I 14 | 70 | 200 | 1,44 | 6x70x35 | 0,09 | 0,36 | 1,80 |
| | SpF1 | 1/2 I 14 | 70 | 200 | 1,44 | – | – | – | 1,44 |
| 100-250 | SpA2 | 1/2 I 20 | 100 | 300 | 3,95 | – | – | – | 3,95 |
| | SpG2 | 1/2 I 20 | 100 | 300 | 3,95 | 8x90x50 | 0,21 | 0,84 | 4,79 |
| | SpF2 | 1/2 I 20 | 100 | 300 | 3,95 | – | – | – | 3,95 |

VARIANTE DE MONTAJ

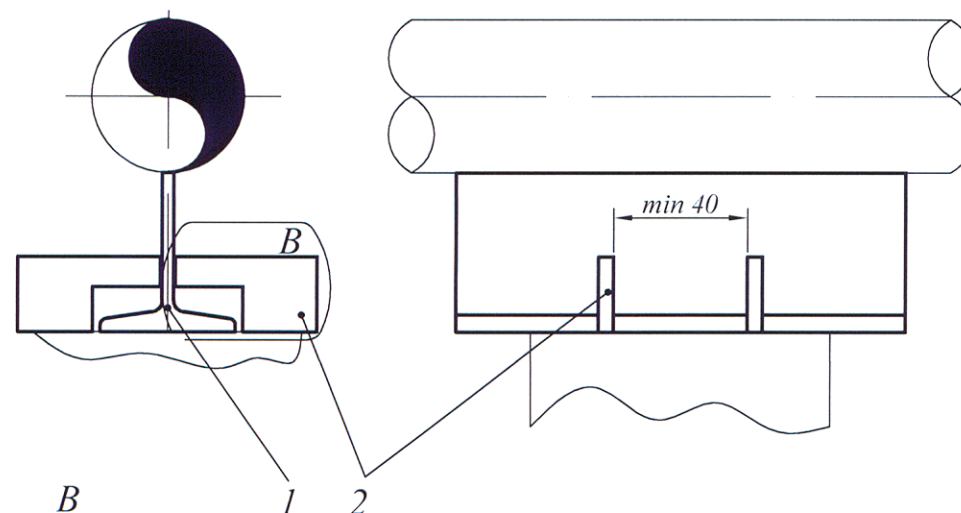
A (alunecator)



F (fix)



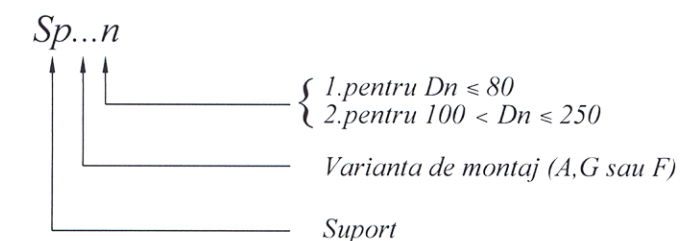
G (ghidat)



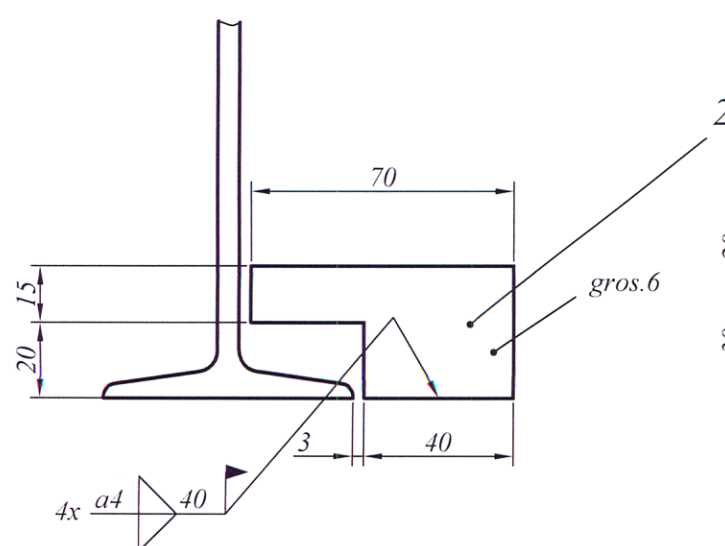
NOTA

- Sudurile de montaj se executa cu electrozi E38, SR EN 499:1997
- Abaterile limita poz.1 si 2, conf. STAS 11111-86

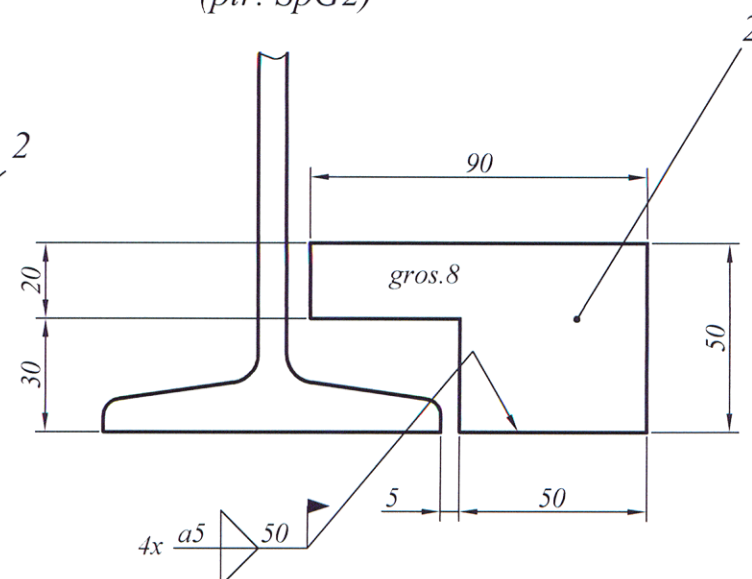
SIMBOLIZARE:




B
(ptr. SpG1)



B
(ptr. SpG2)



REFOLOSIT LA PR.:

| | | | | | | |
|------------------------------|-------------------|---|--|----------|--------------------------|-------------------------|
| — | Electrozi | SR EN 499:1997 | — | E 38 | — | — |
| 2 | Ghidaj | — | 4 | S235JR | Tabla SREN 10029:1994 | Vezi |
| 1 | Sabot | — | 1 | S235JR | 1/2 I SREN 10024:98 | tabe |
| Poz. | Denumirea | Nr.desen sau STAS | Buc. | Material | Observatii | Masa neta kg/buc. |
| | | | | | | |
| | | | | | | |
| | | | | | | |
| | | | | | | |
| Proiectat | ing.Bercea M. |  | R-008 | | | Rev.: 0 |
| Desenat | ing.Constantin A. | | | | | |
| Verificat | ing.Constantin A. | | | | | |
| Contr.STAS | Herascu E. | | | | | |
| Aprobat | ing. Ionescu A. | Masa neta: | Inlocuieste desen nr.: | | | |
| S.C.Ellis'92 SRL Ploiesti | | % | SUPORTURI ALUNECATOARE, FIXE, GHIDATE PENTRU COND. OTEL CARBON DN15÷DN250 | | | |
| | | Data: 10.2004 | Ob: | | | |

* Exemplu de notare : SpF2 - suport fix ptr. cond. Dn250